

# ImmPRESS™ Polymer Detection Reagents

Streamline your immunohistochemistry workflow

## Integrated antibody and enzyme technology for simplified, convenient, sensitive IHC detection

The ImmPRESS™ Polymer reagents combine affinity-purified, cross-adsorbed secondary antibodies with a high-density micropolymer array of reporter enzyme. This introduces significantly more enzyme at the site of primary antibody localization to yield a stronger signal—in a single incubation step.

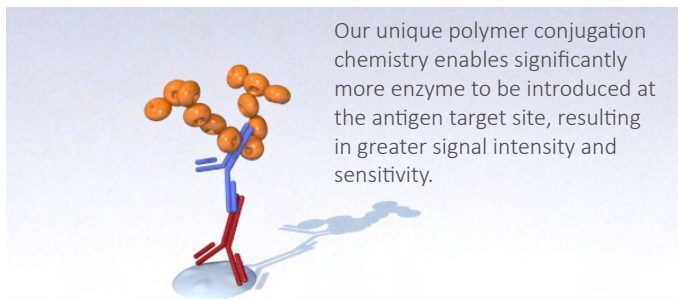
### Why ImmPRESS™?

- High sensitivity
- Unique micropolymer technology
- Timesaving one-step protocols
- Non-biotin based
- Ready-to-use, pre-diluted reagents
- Convenient dropper bottles
- Choice of enzyme (HRP or AP)

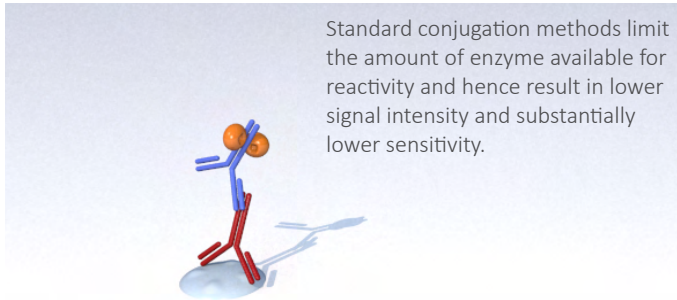
### When to ImmPRESS™?

- Consistent and sensitive detection
- Easy optimization and no risk of dilution error
- Enhanced signals and diminished background staining
- High-sensitivity, crisp detection of nuclear and membrane antigens
- Simplified multiple antigen labeling
- Absence of biotin interference
- Reagents for manual or automated staining

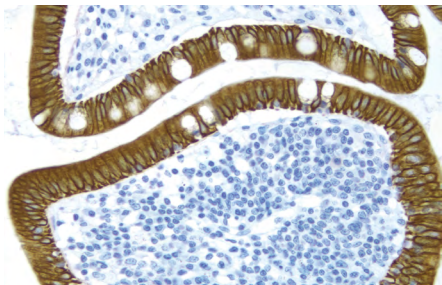
### ImmPRESS™ Polymer detection



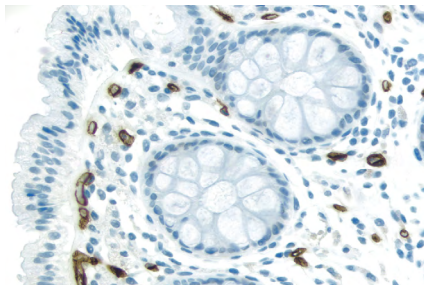
### Enzyme conjugated secondary antibody detection



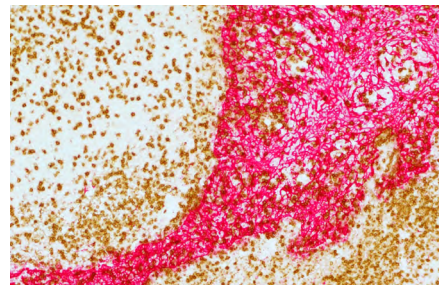
Be ImmPRESSed!



ImmPRESS™ Anti-Mouse Ig and DAB (brown) staining using cytokeratin 8/18 primary antibody. Hematoxylin counterstain (blue).



Colon: Anti-CD34 (m), ImmPRESS™ Excel Amplified Anti-Mouse IgG Staining Kit, ImmPACT™ DAB EqV (brown). Hematoxylin QS counterstain (blue).



Human tonsil (paraffin section) stained for CD3 (DAB, brown) and AE1/AE3 cytokeratin (magenta) using ImmPRESS Duet Kit MP-7714.

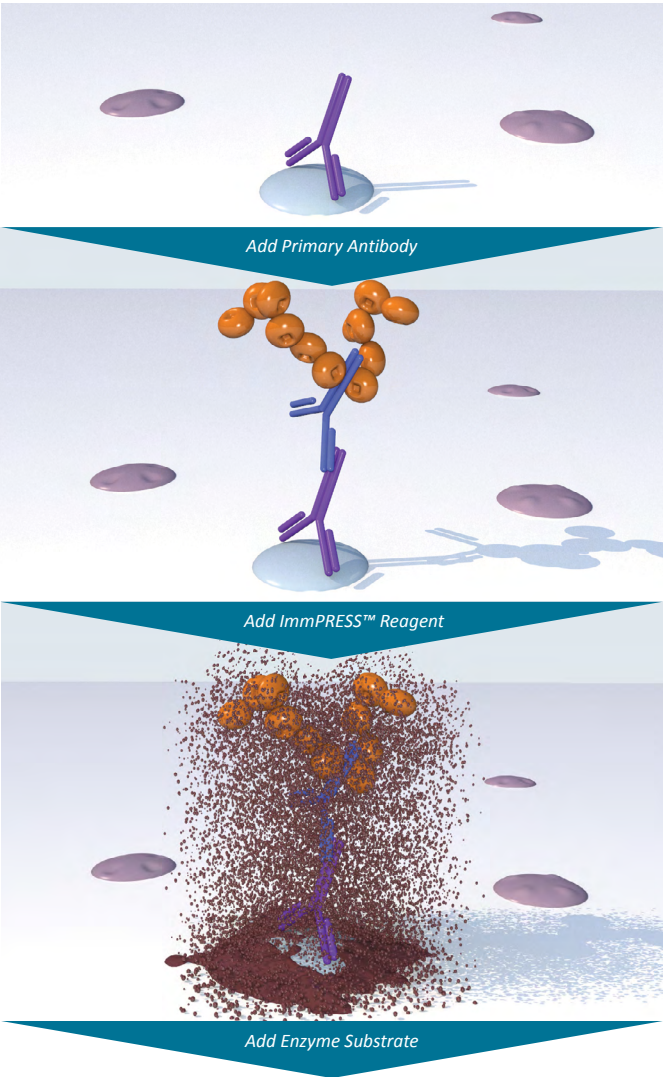
 **VECTOR**  
LABORATORIES

part of Maravai LifeSciences

# Ways to ImmPRESS™: ImmPRESS™ Polymer Detection Kit Options

## One-Step Detection Kits

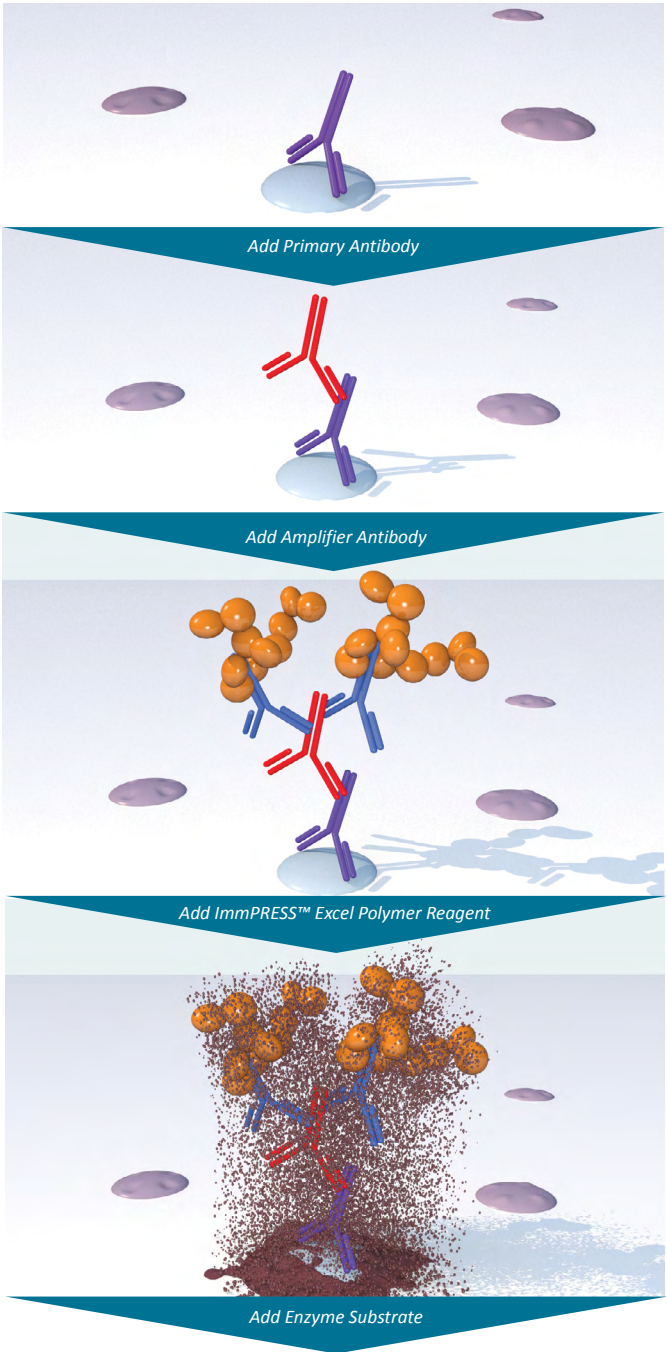
Species-specific, enzyme conjugated secondary antibody polymers.



- Select for:**
- Single Antigen Staining
  - Moderate to high antigen expression
  - Reduce/eliminate species cross-reactivity issues

## Two-Step Detection Kits

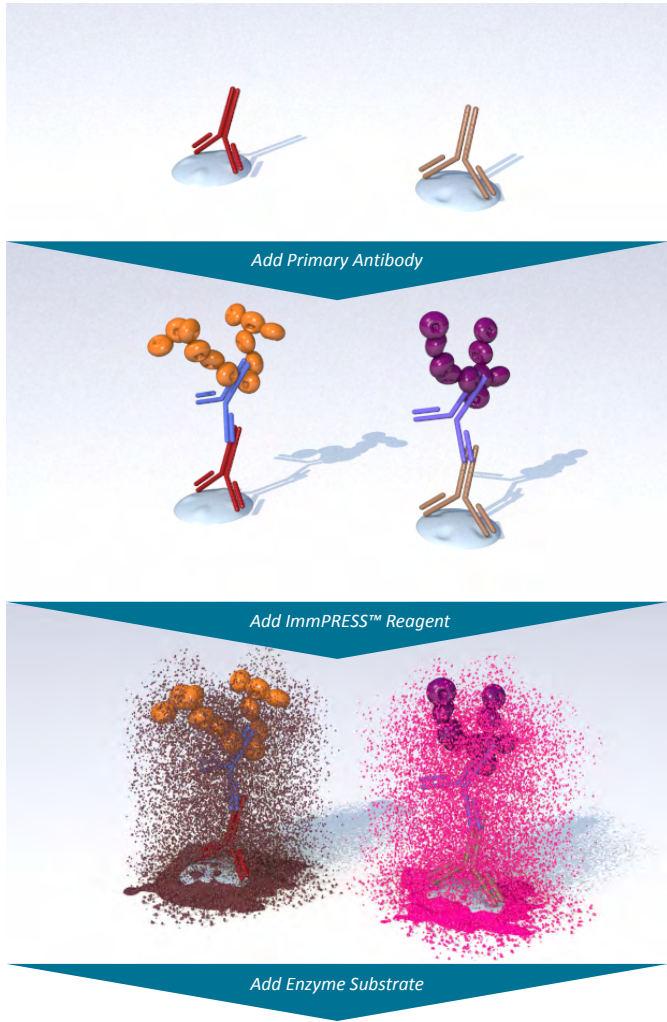
Anti-mouse and anti-rabbit IgG HRP conjugated secondary antibody polymers with additional amplifying reagent.



- Select for:**
- Unknown or low antigen expression
  - Maximize primary antibody dilution
  - Convenience of complete kit format

## Double Staining Kits

Anti-mouse and anti-rabbit IgG HRP and AP conjugated secondary polymer cocktail.



- Select for:**
- Double antigen staining
  - Reduce, optimization requirements
  - Streamline the procedure

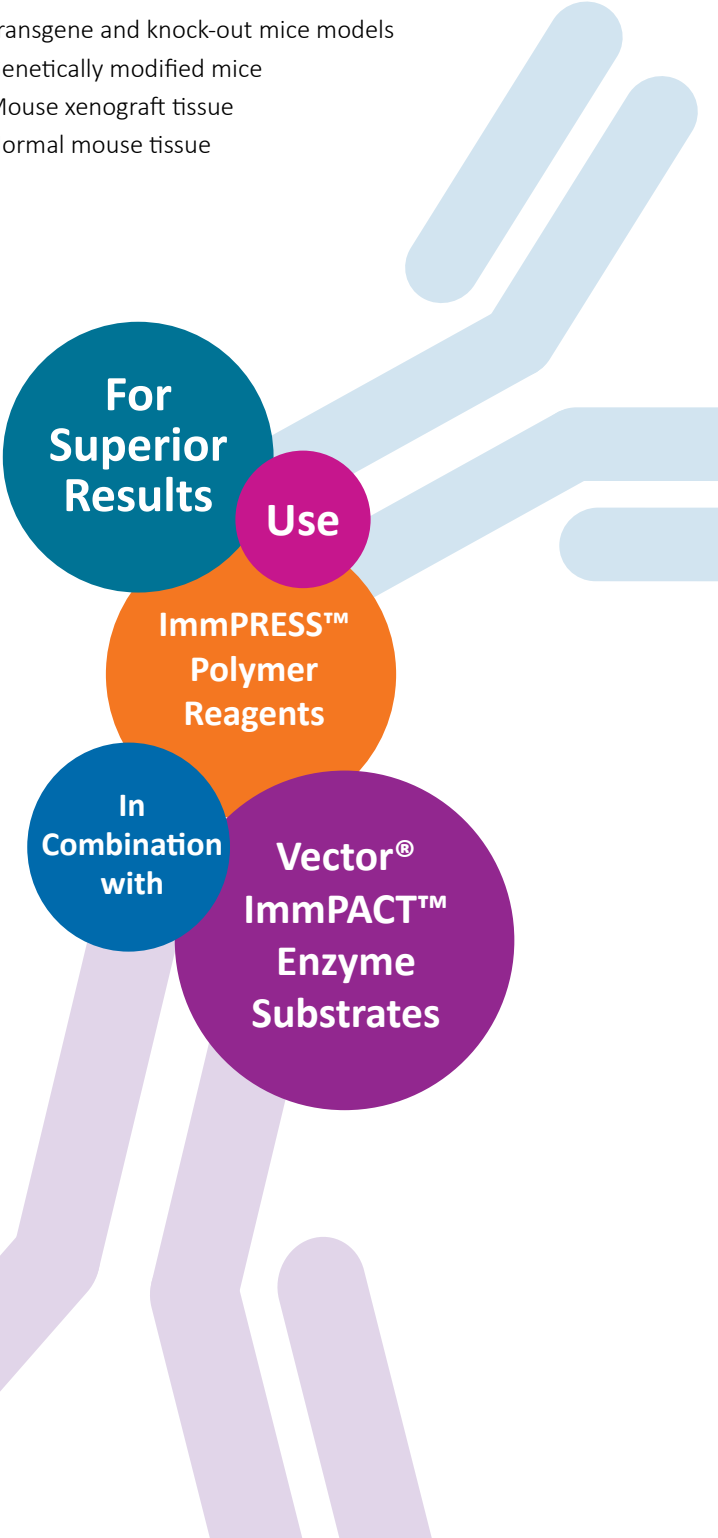
## Species on Species Detection

Mouse on Mouse (M.O.M.™) ImmPRESS™ HRP Polymer Kit

Specific blocking and detection reagents for unambiguous visualization of mouse primary antibodies on mouse tissue sections.

**Select for:**

- Transgene and knock-out mice models
- Genetically modified mice
- Mouse xenograft tissue
- Normal mouse tissue





# ImmPRESS™ Kits and Reagents

Target Species	Product	Alkaline Phosphatase (AP)	Horseradish Peroxidase (HRP)	Veterinary HRP Reagent (VR) <sup>1</sup>	Excel Amplified (HRP) <sup>2</sup>
Rabbit	ImmPRESS™ Anti-Rabbit IgG Polymer Detection Kits				
	Made in horse	<a href="#">MP-5401</a>	<a href="#">MP-7401</a>	<a href="#">MP-6401</a>	<a href="#">MP-7601</a>
	Made in goat		<a href="#">MP-7451</a>		
Mouse	ImmPRESS™ Anti-Mouse IgG Polymer Detection Kits				
	Made in horse	<a href="#">MP-5402</a>	<a href="#">MP-7402</a>	<a href="#">MP-6402</a>	<a href="#">MP-7602</a>
	Made in horse (rat adsorbed)		<a href="#">MP-7422</a>		
	Made in goat		<a href="#">MP-7452</a>		
	Mouse on Mouse (M.O.M.™) ImmPRESS™ HRP Polymer Kit <sup>3</sup>		<a href="#">MP-2400</a>		
	Mouse on Mouse (M.O.M.™) ImmPRESS™ HRP Polymer Anti-Mouse Reagent		<a href="#">MPX-2402</a>		
Rabbit and Mouse	ImmPRESS™ Universal Antibody (Anti-Mouse IgG/Anti-Rabbit IgG) Polymer Detection Kit (made in horse) <sup>4</sup>		<a href="#">MP-7500</a>		
	ImmPRESS™ Duet Double Staining HRP/AP Polymer Kit (anti-rabbit IgG-brown, anti-mouse IgG-red) <sup>5</sup>	----- <a href="#">MP-7714</a> -----			
	ImmPRESS™ Duet Double Staining HRP/AP Polymer Kit (anti-mouse IgG-brown, anti-rabbit IgG-red) <sup>5</sup>	----- <a href="#">MP-7724</a> -----			
Rat	ImmPRESS™ Anti-Rat IgG Polymer Detection Kit				
	Made in goat	<a href="#">MP-5404</a>	<a href="#">MP-7404</a>		
	Made in goat (mouse adsorbed)	<a href="#">MP-5444</a>	<a href="#">MP-7444</a>		
Goat	ImmPRESS™ Anti-Goat IgG Polymer Detection Kit		<a href="#">MP-7405</a>		
<b>Vector® ImmPACT™ Enzyme Substrates</b>					
	ImmPACT™ Vector® Red (Magenta)	<a href="#">SK-5105</a>			
	ImmPACT™ DAB EqV (Brown)		----- <a href="#">SK-4103</a> -----		
	ImmPACT™ DAB (Brown)		----- <a href="#">SK-4105</a> -----		
	ImmPACT™ AEC (Red)		----- <a href="#">SK-4205</a> -----		
	ImmPACT™ AMEC Red (Red)		----- <a href="#">SK-4285</a> -----		
	ImmPACT™ VIP (Purple)		----- <a href="#">SK-4605</a> -----		
	ImmPACT™ SG (blue/gray)		----- <a href="#">SK-4705</a> -----		
	ImmPACT™ NovaRed™ (Red)		----- <a href="#">SK-4805</a> -----		

<sup>1</sup>Eliminate off-target binding, increase signal specificity in bovine, goat, sheep, swine, horse, cat, dog, rabbit, rat, and mouse tissues.

<sup>2</sup>Maximize sensitivity with a two-step protocol using an amplifier antibody; includes ImmPACT™ DAB EqV substrate; not recommended for bovine, goat, or sheep tissue (amplifier antibody made in goat, may cross-react with endogenous IgG).

<sup>3</sup>Designed for localization of mouse primary antibodies on mouse tissue samples.

<sup>4</sup>Contains both anti-rabbit and -mouse IgG, for laboratories using both types of primary antibodies (eliminates need to purchase two separate kits).

<sup>5</sup>Designed for use in dual antigen labeling studies; includes ImmPACT™ DAB and ImmPACT™ Vector® Red substrates.